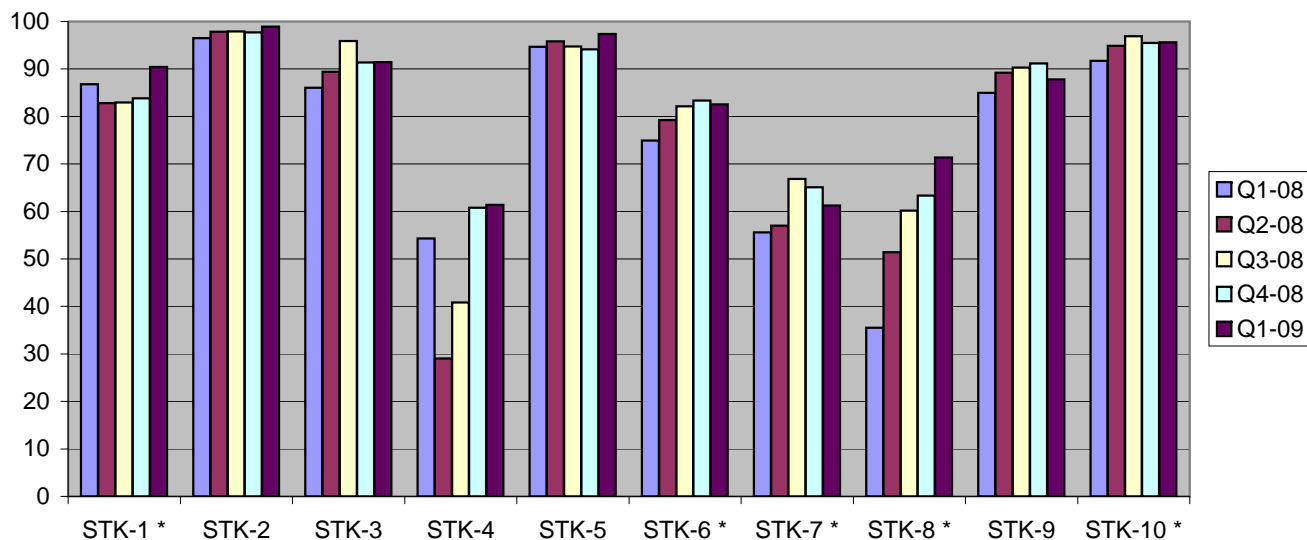


**Stroke Performance Measures, Minnesota Stroke Registry,
2008 - Q12009 Quarterly Results**



| | | Q1 - 08 | Q2 - 08 | Q3 - 08 | Q4 - 08 | Q1 - 09 | GWTG National Q1 - 09 |
|-----------------|--|---------|---------|---------|---------|---------|--------------------------|
| STK-1 * | DVT Prophylaxis by end of Day 2 | 86.8 | 82.8 | 82.9 | 83.8 | 90.5 | 92.9 |
| STK-2 | Antithrombotic Therapy at Discharge | 96.5 | 97.9 | 97.9 | 97.7 | 99.0 | 97.6 |
| STK-3 | Anticoagulation for Atrial Fibrillation | 86.1 | 89.4 | 95.9 | 91.4 | 91.5 | 93.5 |
| STK-4 | tPA Given | 54.3 | 29.0 | 40.8 | 60.8 | 61.4 | 70.8 |
| STK-5 | Antithrombotic Therapy by end of Day 2 | 94.7 | 95.8 | 94.8 | 94.1 | 97.4 | 96.3 |
| STK-6 * | Lipid Lowering Therapy at Discharge | 74.9 | 79.3 | 82.1 | 83.3 | 82.5 | 84.9 |
| STK-7 * | Dysphagia Screening | 55.6 | 57.0 | 66.8 | 65.1 | 61.2 | 73.7 |
| STK-8 * | Stroke Education | 35.5 | 51.4 | 60.2 | 63.3 | 71.3 | 73.2 |
| STK-9 | Smoking Cessation Counseling | 85.0 | 89.2 | 90.3 | 91.2 | 87.8 | 96.1 |
| STK-10 * | Assessed for Rehabilitation | 91.7 | 94.9 | 96.9 | 95.5 | 95.6 | 96.0 |

* P for trend < .05

PLEASE READ: Numbers that produce these figures are in Columns C through F and are currently "hidden" by coloring the text white. Do not overwrite or delete numbers in those fields